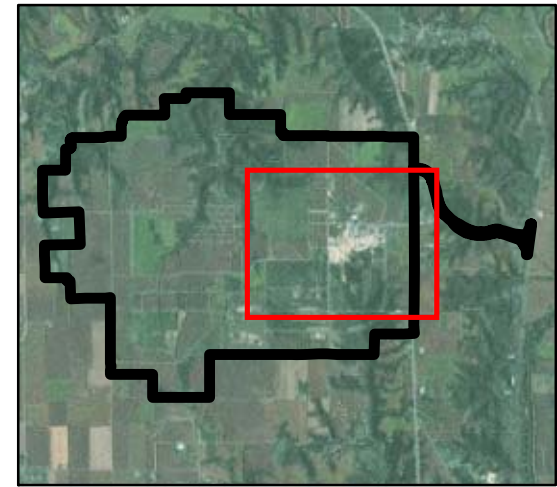


**UTILITIES - FIRE WATER**

**Legend**

-  NeCD Boundary
-  Buildings
-  Highways
-  Roads
-  Streams
-  Water Valves
-  Fire Water Lines

**DRAFT**



Sources: U.S. Army; Burns & McDonnell



**NEWPORT CHEMICAL DEPOT  
REUSE MASTER PLAN**

Newport Chemical Depot Reuse Authority  
Vermillion County, Indiana



**Matrix Design Group Inc.**  
Integrated Design Solutions

ECONOMICS RESEARCH ASSOCIATES - CHICAGO, ILLINOIS  
BURNS & MCDONNELL - CHICAGO, ILLINOIS  
GARRITY & KNISELY - BOSTON, MASSACHUSETTS

File: E:\Information\GIS\Projects\Newport\_Chemical\_Depot\09\_23\_00\001\workspace\Draft\_2\_Final\NeCD\_Utilities\_Fire\_Water\_11x17.mxd, 6/23/2009, cbr, martin