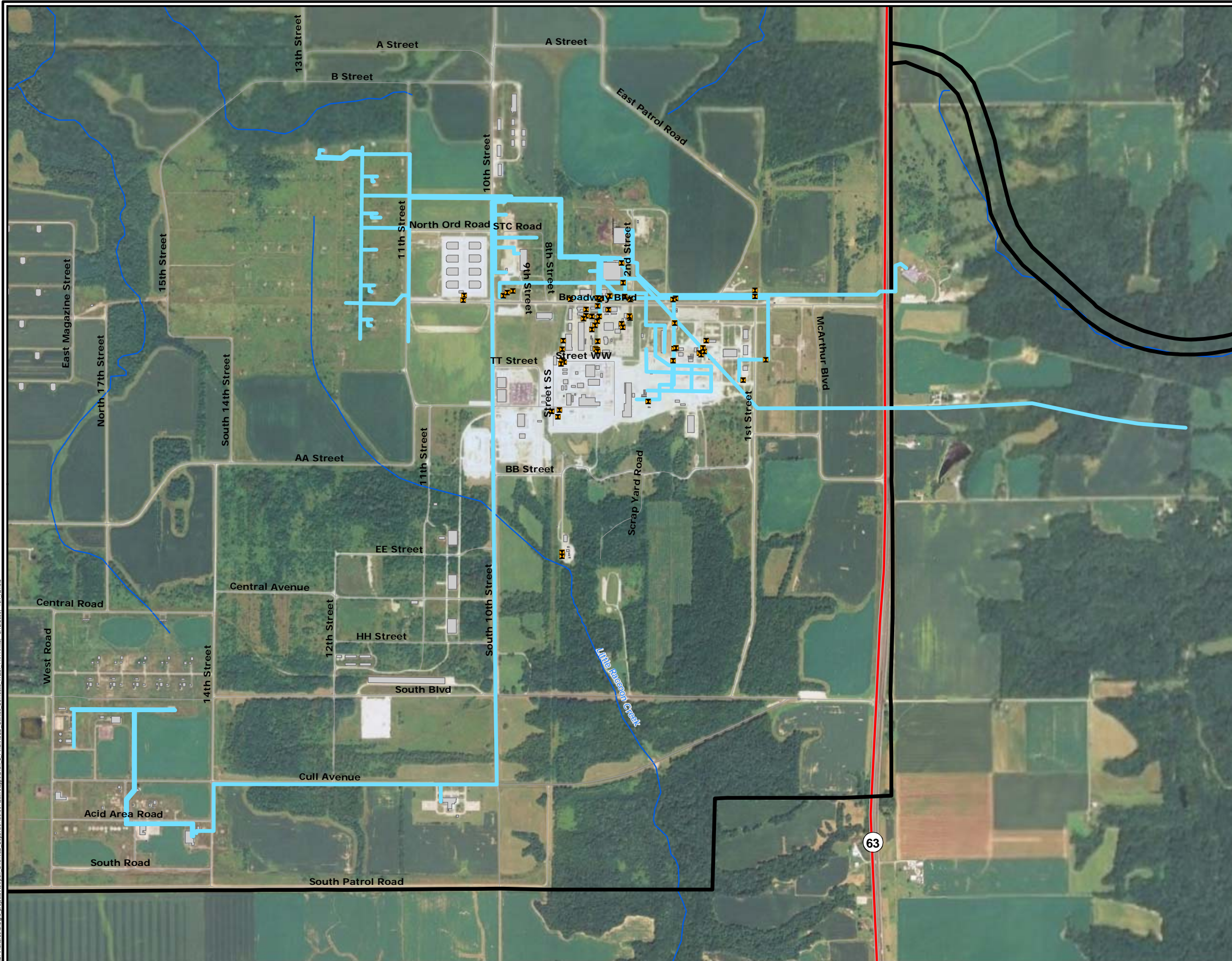






FILE: \\burns\GIS\16_06\06\Newport_Chemical_Depot\06_06_16\06_06_16\Domestic_Water_11x17.mxd, 6/22/2016, 10:41:00 AM

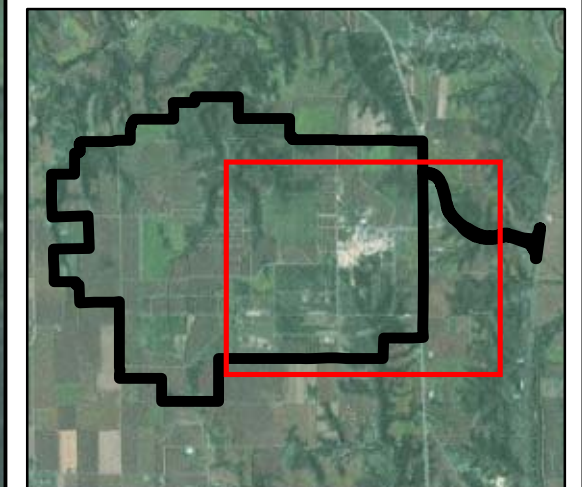


UTILITIES - DOMESTIC WATER

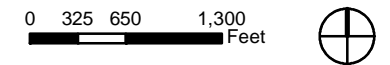
Legend

-  NeCD Boundary
-  Buildings
-  Highways
-  Roads
-  Streams
-  Water Valves
-  Domestic Water Lines

DRAFT



Sources: U.S. Army; Burns & McDonnell



NEWPORT CHEMICAL DEPOT REUSE MASTER PLAN

Newport Chemical Depot Reuse Authority
Vermillion County, Indiana

 **Matrix Design Group Inc.**
Integrated Design Solutions

ECONOMICS RESEARCH ASSOCIATES - CHICAGO, ILLINOIS
BURNS & MCDONNELL - CHICAGO, ILLINOIS
GARRITY & KNISELY - BOSTON, MASSACHUSETTS