
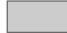

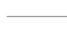


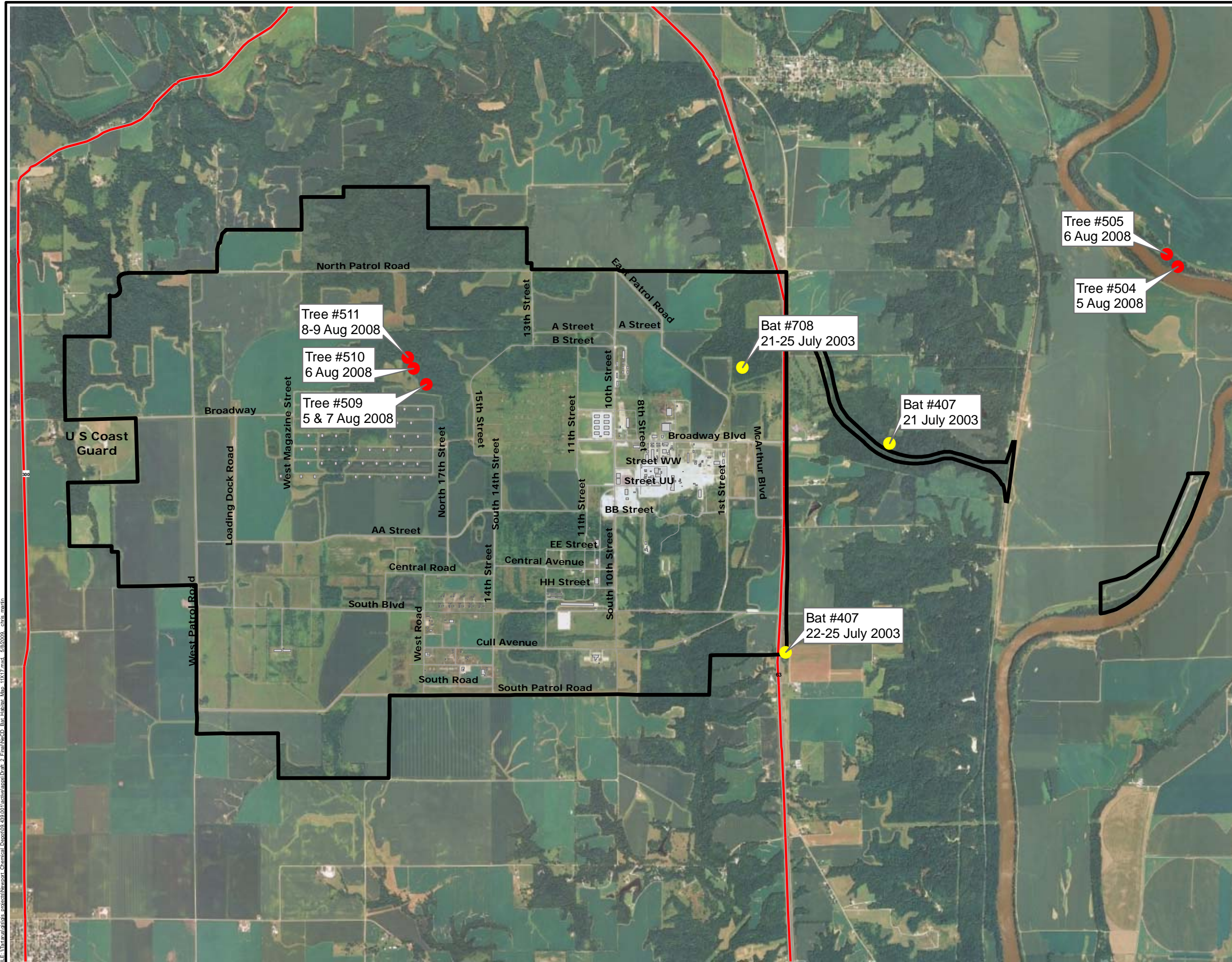


# INDIANA BAT HABITAT

## Legend

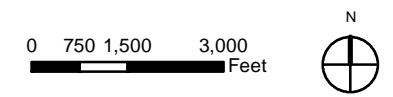
-  NeCD Boundary
-  Buildings
-  Highways
-  Roads
-  Roost Tree Location 2003
-  Roost Tree Location 2008



U S Coast Guard

DRAFT

Source: Redwing Ecological Services, INC



## NEWPORT CHEMICAL DEPOT REUSE MASTER PLAN

Newport Chemical Depot Reuse Authority  
Vermillion County, Indiana



ECONOMICS RESEARCH ASSOCIATES - CHICAGO, ILLINOIS  
BURNS & MCDONNELL - CHICAGO, ILLINOIS  
GARRITY & KNISELY - BOSTON, MASSACHUSETTS

FILE: \\nrcd\projects\GIS\Newport\_Chemical\_Depot\09\_23\_09\GIS\Newport\_CDP\_2\_Final\NeCD\_Bat\_Habitat\_Map\_1x17.mxd - 6/26/2010 - chris.martin