

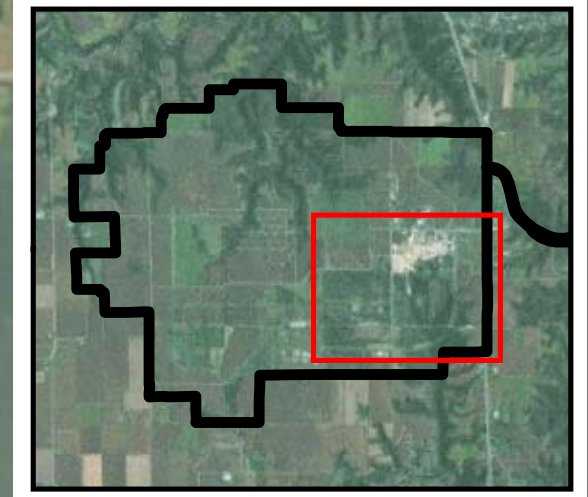
### ASSESSED FACILITIES

#### Legend

- Assessed Building
- Buildings
- Roads

Note: Some buildings shown may have been recently demolished during the demilitarization process.

**DRAFT**



Source: U.S. Army



### NEWPORT CHEMICAL DEPOT REUSE MASTER PLAN

Newport Chemical Depot Reuse Authority  
Vermillion County, Indiana

**Matrix Design Group Inc.**  
Integrated Design Solutions

ECONOMICS RESEARCH ASSOCIATES - CHICAGO, ILLINOIS  
BURNS & MCDONNELL - CHICAGO, ILLINOIS  
GARRITY & KNISELY - BOSTON, MASSACHUSETTS

File: E:\Information\GIS\MapServer\Chemical\_Depot\00\_430\_001\workspace\Draft\_2\_Final\MapCD\_Assessed\_Facilities\_11x17.mxd 6/17/2009 4:15:41 PM