





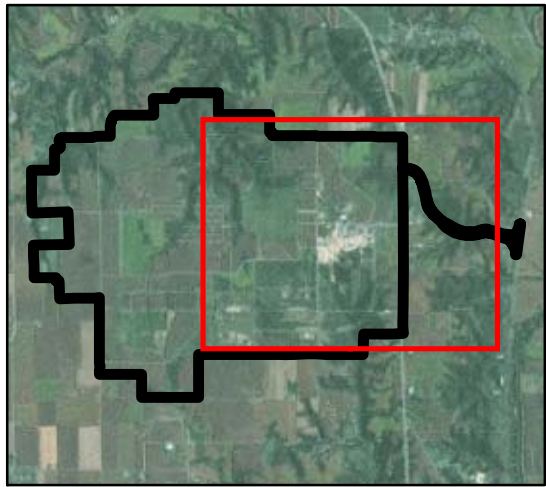


**UTILITIES - ELECTRICAL**

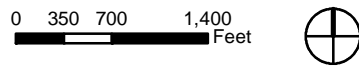
**Legend**

-  NeCD Boundary
-  Buildings
-  Highways
-  Roads
-  Streams
-  Electrical Lines
-  Substations

**DRAFT**



Sources: U.S. Army; Burns & McDonnell



**NEWPORT CHEMICAL DEPOT  
REUSE MASTER PLAN**

Newport Chemical Depot Reuse Authority  
Vermillion County, Indiana



**Matrix Design Group Inc.**  
Integrated Design Solutions

ECONOMICS RESEARCH ASSOCIATES - CHICAGO, ILLINOIS  
BURNS & McDONNELL - CHICAGO, ILLINOIS  
GARRITY & KNISELY - BOSTON, MASSACHUSETTS

File: \\burnsmcd\projects\Newport\_Chemical\_Depot\09\_23\_00\001\baseline\Draft\_2\_Final\NeCD\_Utilities\_Electrical\_11x17.mxd\_6/2/2009\_08:16:16